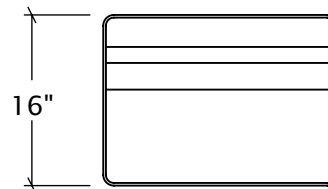
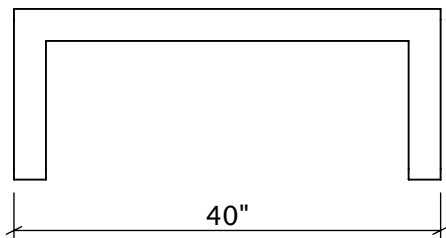
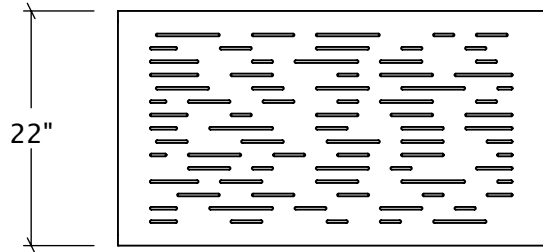


Union Plaza Coffee Table

UP-CT



Materials, Finishes, and Details

- Coffee table at 40"W, 22"D and 16"H.
- Fabricated from aluminum with a durable powder-coat finish.
- When specifying, select the powder-coat finish.
- Anchored option available.
- Approximate weight: 38lbs.

To Specify

- Specify UP-CT by DM Braun.
- Specify powder-coat color.
- For more detail regarding materials and color options visit www.dmbraunco.com/material-options.